

# WinCC OA – Demo

## Information

# Content

This Whitepaper provides an overview of the Demo Project and the Feature "Device Classes".

Content .....	2
1. Disclaimer .....	3
2. Device classes .....	4
3. Demo .....	4

# 1. Disclaimer

This whitepaper is for information purposes only and is provided "as is" with no warranties whatsoever including any warranty of merchantability, fitness for any particular purpose, or any warranty otherwise arising out of any proposal, specification, or sample.

No license, expressed or implied, to any intellectual property rights is granted or intended hereby.

Product or company names mentioned herein may be the trademarks of their respective owners.

This whitepaper may not be incorporated into any contract. It is not a commitment to deliver any material, code, or functionality, and should not be relied upon in making purchasing decisions. The development, release and timing of any features or functionality described for ETM's products remains at the sole discretion of ETM.

No part of this document may be reproduced except as authorized by written permission. The copyright and the foregoing restriction extend to reproduction in all media.

The information provided in this documentation contains merely general descriptions or performance characteristics, which in case of actual use, do not always apply as described and may change as a result of further developments of the products. An obligation to provide the respective characteristics shall only exist if expressly agreed in the terms of contract.

Collection of documents, WinCC OA applications, other material marked as BETA or Demo apply the following rules:

- No warranty
- No rights can be obtained from any of these files.
- You may copy and use any of the files at your own risk!
- You are not allowed to use it for any commercial operation.
- Feedback is highly appreciated but no official support is assured

ETM reserves the right to withdraw these files at any time without any explanatory statement. In this case you have to destroy the files immediately.

## Security information

Siemens provides products and solutions with industrial security functions that support the secure operation of plants, solutions, machines, equipment and/or networks. They are important components in a holistic industrial security concept. With this in mind, Siemens' products and solutions undergo continuous development. Siemens recommends strongly that you regularly check for product updates.

For the secure operation of Siemens products and solutions, it is necessary to take suitable preventive action (e.g. cell protection concept) and integrate each component into a holistic, state-of-the-art industrial security concept. Third-party products that may be in use should also be considered. For more information about industrial security, visit <http://www.siemens.com/industrialsecurity>.

To stay informed about product updates as they occur, sign up for a product-specific newsletter. For more information, visit <http://support.automation.siemens.com>.

## 2. Device classes

The latest version of WinCC OA 3.14 P003 has been extended with the function of device classes. With this adaptive design is possible. However, what are device classes? Among device classes we understand performing hardware (for example, phone, tablet, TV) that can be summed up in groups due to their similar size and resolution. With this extension, it is possible to create custom versions of existing panels for various device classes. Instead of opening the standard panel on a device with device class the individual variation will be opened instead (if available). There is also the possibility of adapting existing panels to the resolution of a devices class without having to redraw it. To ensure an optimum start, we created a demo for mobile devices which will be described in more detail in the following points.

See more information in the WinCC OA documentation.

## 3. Demo

The Demo contains:

- Preconfigured classes for smart phone and tablet
- Panels for these classes in landscape and portrait format

If you want to use this demo project you only must edit the “config” and “config.webclient” file so that you can connect with your mobile device to the server within your network. The demo can also be used with the feature ULC UX. Possible configurations can be found in the WinCC OA documentation.

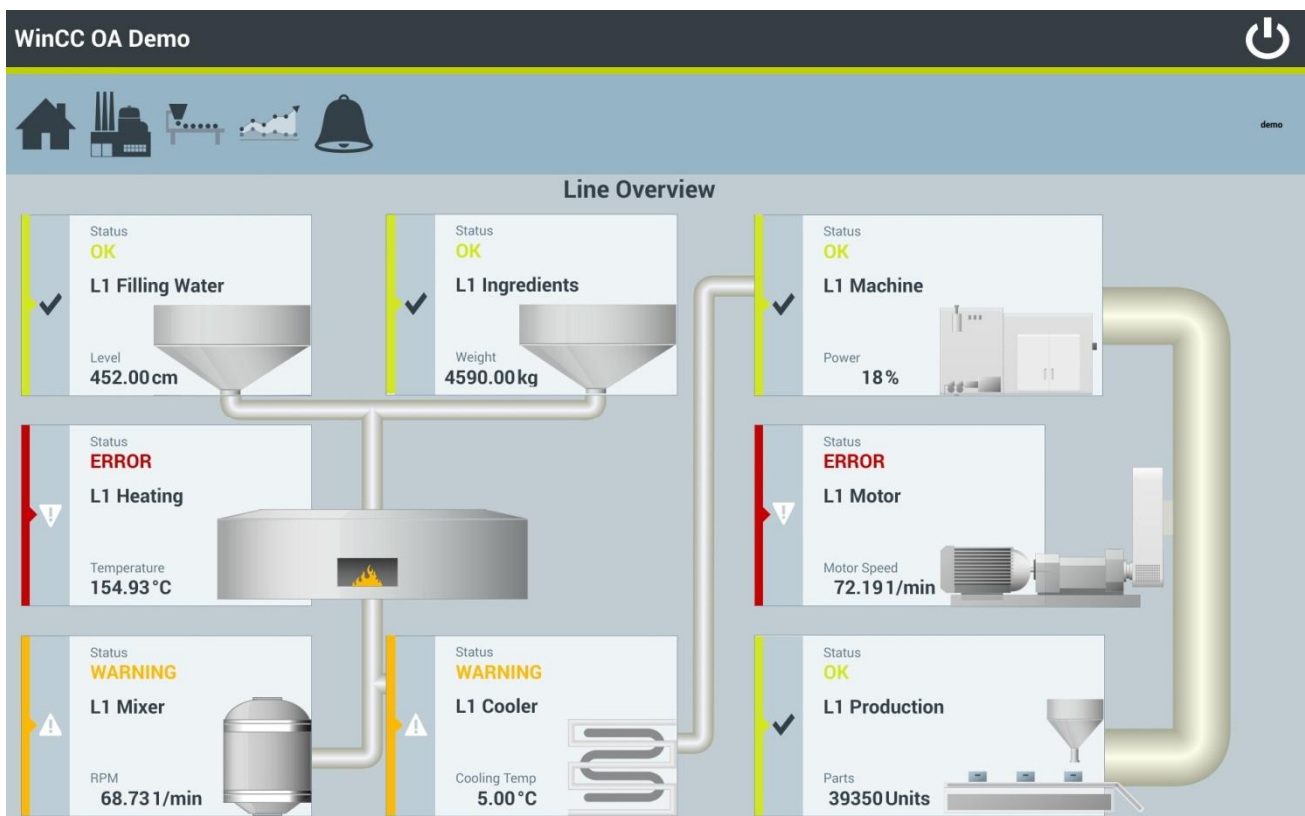


Figure 1: Line overview displayed on a tablet

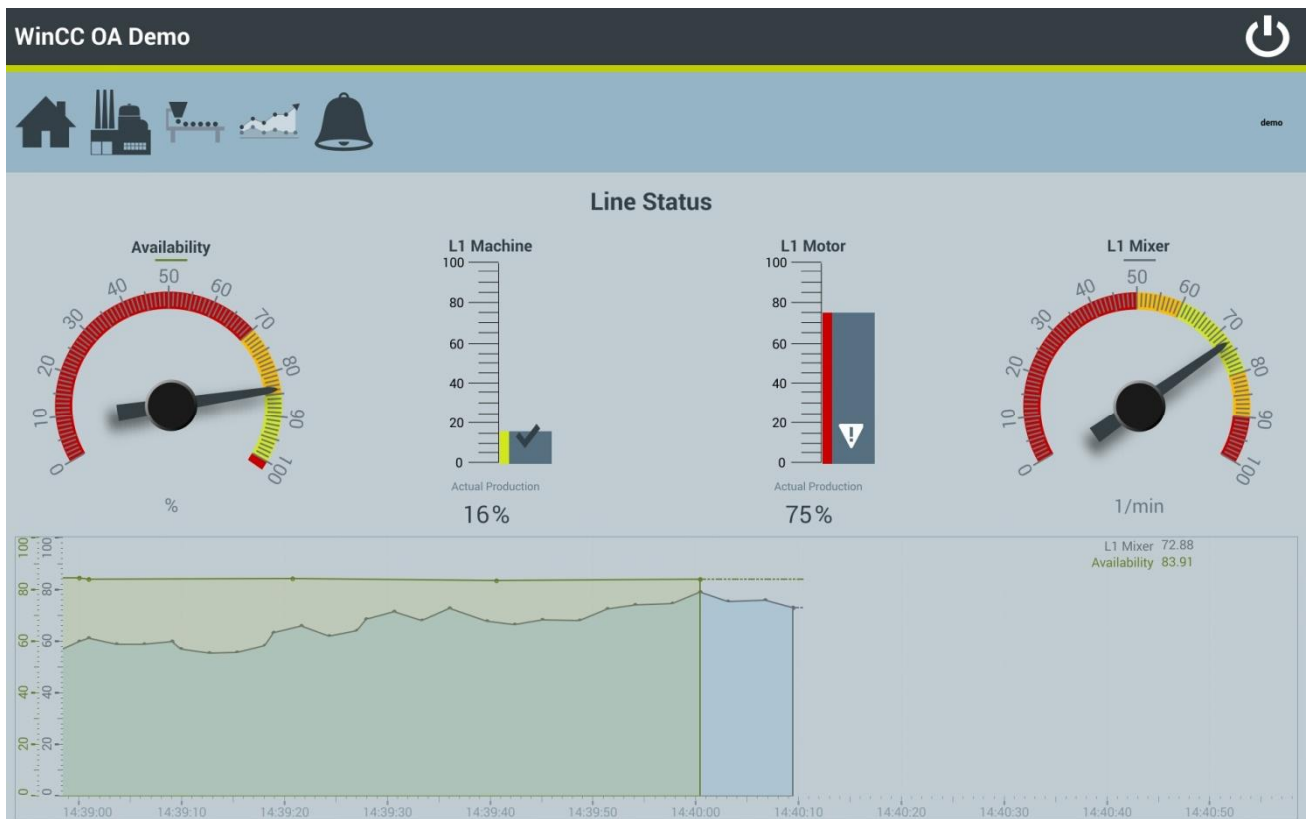


Figure 2: Line status displayed on a tablet

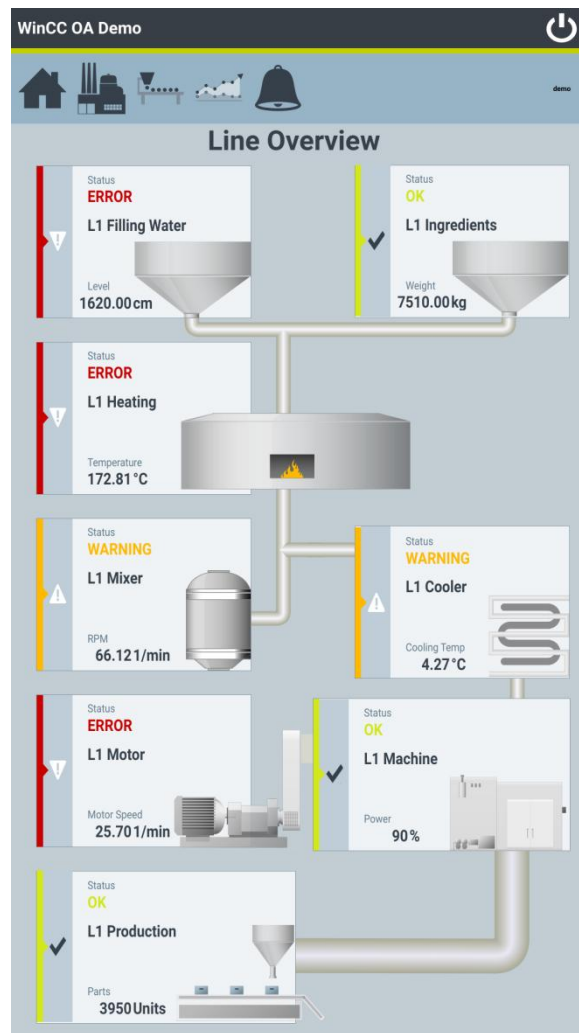


Figure 3: Line overview displayed on a smartphone

ETM professional control GmbH  
A Siemens Company  
Marktstraße 3  
7000 Eisenstadt  
[www.etm.at](http://www.etm.at)

[www.siemens.com](http://www.siemens.com)  
All rights reserved. All trademarks used  
are owned by Siemens or their respective owners.

© Siemens AG 2016